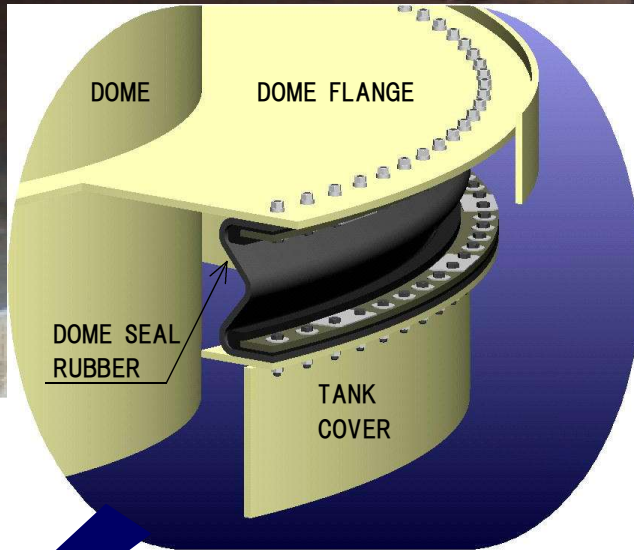


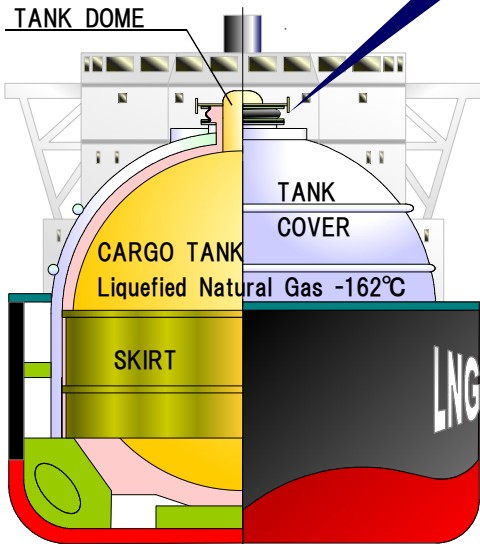
DOME SEAL RUBBER

Style-Σ PAT.



DOMES SEAL RUBBER absorbs the mutual swing of cargo tank and ship hull which occurs while the LNG & LPG ship sails.

Also, This rubber hold pressure of inert gas and seal up water from outside.



MITSUBISHI RUBBER CO., LTD.

Merit

“HEXA Dome Seal Rubber, Style Σ ” absorbs displacement from rolling and pitting between ship hull and tank, and it holds gas pressure by only the rubber. Also, by using resin retainer which doesn't rust, it makes maintenance-free and longer operating life possible.

Relief

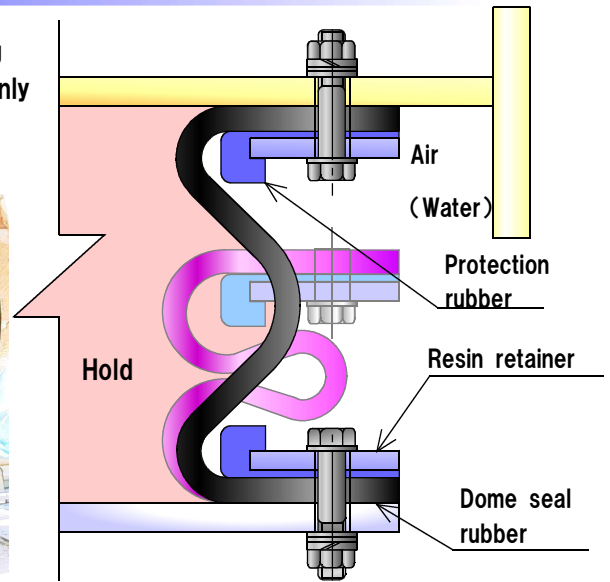
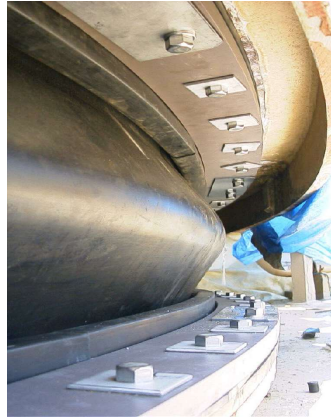
Good for expansion by the structure of only the rubber

Safety

Prevents retainer's bite into the Dome seal rubber by using protection rubber

Long life operation

Good for durability by using resin retainer



Demerit of conventional products

The possibility of the decreased-pressure is high.

Steel retainer

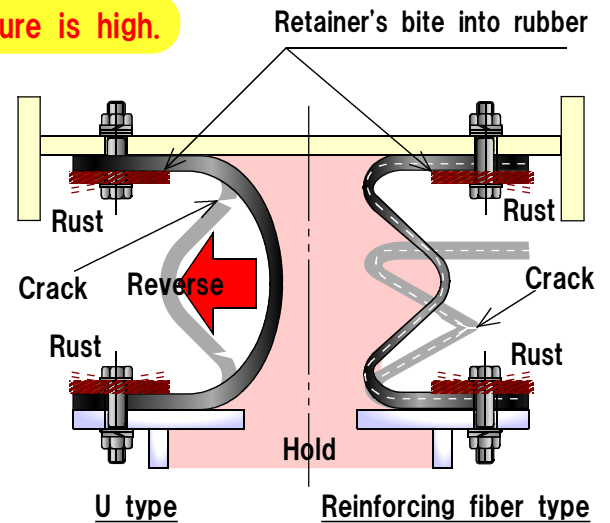
- With the corrosion by the rust, the possibility of the retainer's hold power declines is high.
- Easy for the crack because edge of retainer is covered in the rust, and it's bite into the Dome seal rubber.

U type

- Easy for the crack to occur in bend position because it reverse by inner pressure.

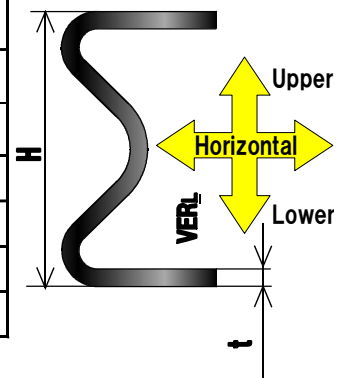
Reinforcing fiber type

- Easy for crack to occur between rubber and reinforcing fiber because the fiber is not elastic.



Performance

Material/Hardness		Chloroprene rubber / A60/S \pm 5 (Duro-A)			
Name(type)		200HD(○・□)	230HD(○・□)	300HD(○)	350HD(○)
Size	H (mm)	200	230	300	350
	t (mm)	8	10	15	18
Recommendation movement (mm)	Upper	85	65	10	30
	Lower	50	55	130	130
	Horizontal	\pm 25	\pm 25	\pm 25	\pm 25
Pressure (kPa)		-5~15	-7~25	-5~15	-5~15



※This specification is based on the delivery results in March, 2008.

※We supplying not only style Ω () but also style Σ for LPG.



MITSUBISHI RUBBER CO., LTD.

- Head Office 2-1-31, Doujima, Kita-ku, Osaka 5300001
- Headquarter & Plant 2-3-5, Mitsugaoka, Nishi-ku, Kobe 6512228
- Tokyo Branch 1-8-7, Roppongi, Minato-ku, Tokyo 1060032
- Fukuoka Branch 2-1, Nakahara shinmachi, Tobata-ku, Kitakyushu 8040003
- Nagoya Office 2-20-25, Marunouch, Naka-ku, Nagoya 460-0002
- Oita Office 6-15, Hara shinmachi, Oita 8700913
- Kisarazu Office 3-4-3, Yamato, Kisarazu-City, Chiba 2920805
- Kobe Office 9-1-30, Wakamatsu-cho, Nagata-ku, Kobe 6530038

- TEL.+81-6-6344-3555 FAX.+81-6-6344-5660
- TEL.+81-78-995-3331 FAX.+81-78-995-3332
- TEL.+81-3-5114-8551 FAX.+81-3-5114-8552
- TEL.+81-93-873-5606 FAX.+81-93-873-5606
- TEL.+81-52-223-0202 FAX.+81-52-223-8256
- TEL.+81-97-556-5615 FAX.+81-97-556-5711
- TEL.+81-438-20-1600 FAX.+81-438-97-7336
- TEL.+81-78-641-5681 FAX.+81-78-641-5033